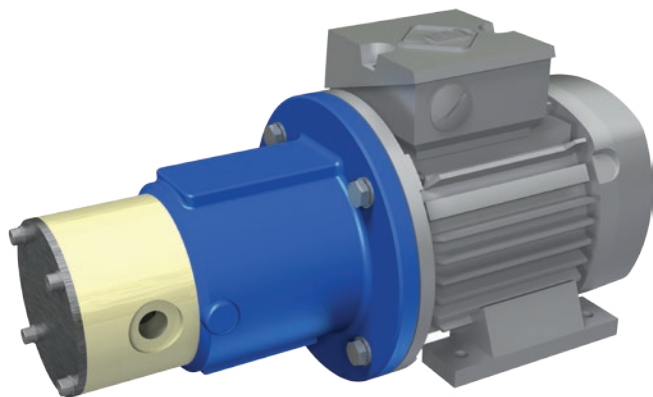


# MAGNETICALLY COUPLED ROTARY SLIDING VANE PUMP

## Series VANE-MAG MP

MP 114 - 514



### PERFORMANCE DATA

Nominal speed:	1450 1/min / 1750 1/min
Nominal frequency:	50 Hz / 60Hz
Nominal flow rate:	
MP 114:	160 l/h / 200 l/h (52,83 US gph)
MP 214:	230 l/h / 280 l/h (73,97 US gph)
MP 314:	290 l/h / 380 l/h (100,39 US gph)
MP 414:	400 l/h / 495 l/h (130,77 US gph)
MP 514:	480 l/h / 585 l/h (154,54 US gph)
Discharge pressure, max:	5 bar (72,52 psi)
Design pressure:	PN 6 bar (87,2 psi)
Temperature, max.:	65°C (149°F)
Viscosity, max.:	1000 mPa s
Density, max.:	1,9 kg/dm³

### APPLICATIONS

The VANE-MAG® sliding vane pumps have proven their performance in every application that requires lower flow rates at high discharge pressure, when corrosive liquids must be metered.

#### Typical Applications:

- Water treatment especially precipitation, flocculation, sedimentation and neutralisation
- Metering pump in Biodiesel production
- Metering pump in laboratory environments
- Chemical dosing / metering applications
- Plant Engineering
- Equipment Engineering
- Pharmaceutical-, Medical-, Bio- Engineering

### MATERIALS

Housing:	Polypropylene, PVDF
O-Rings:	EPDM, Viton, Kalrez
Rotor:	PVDF-FCR
Stator, Vanes.:	Phenoli Resin Carbon-Graphite
Bearings:	SiC

### CONNECTIONS

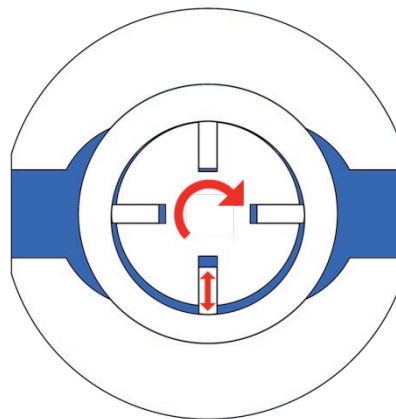
Threads:	G3/8" female, 1/2" NPT female
Lap Joint Flanges:	DN15 PN10, 1/2" ANSI

### DESIGN FEATURES

- Rotating positive displacement pump
- Sliding Vane Pump
- Corrosion resistant due to non-metallic materials
- Magnetically coupled
- Leak-Free
- Rugged
- Wet self-priming
- Compact block design
- Approximately no pulsation
- Middle to high discharge pressure
- Low capacity flow rates
- Metering capable

### PRODUCT DESCRIPTION

MARCH Series: VANE-MAG® MP pumps are rotary positive displacement pumps, magnetically coupled and made of non-metallic materials. Characteristic wise, rotary sliding vane pumps generate low volumetric flows with middle to high discharge pressures and approximately no pulsation. The operating principle is based on radial sliding vanes, which are rotating in an eccentric stator.



The pump housing is made of corrosion resistant solid block plastics like PP or PVDF. The motor power is transmitted by a frictional connection to the hydraulic part of the pumps by strong Neodymium-Permanent-Magnets. So the pump is able to work without any shaft seals, which guarantees a safe and maintenance-free transfer of the liquid without any leakage of corrosive, toxic and explosive fluids. Pumps for hazardous explosive areas, zone 1 or 2, can be made out of conductive PVDF.

### MOTOR ADAPTION

EU Version:	IEC Size 71 B35, 0,37kW 1500 1/min
US Version:	NEMA56C, 0.5 HP 1750 1/min



VANE-MAG North America  
Vissers Sales Corp. : sales@vissers.on.ca : 905-841-4073