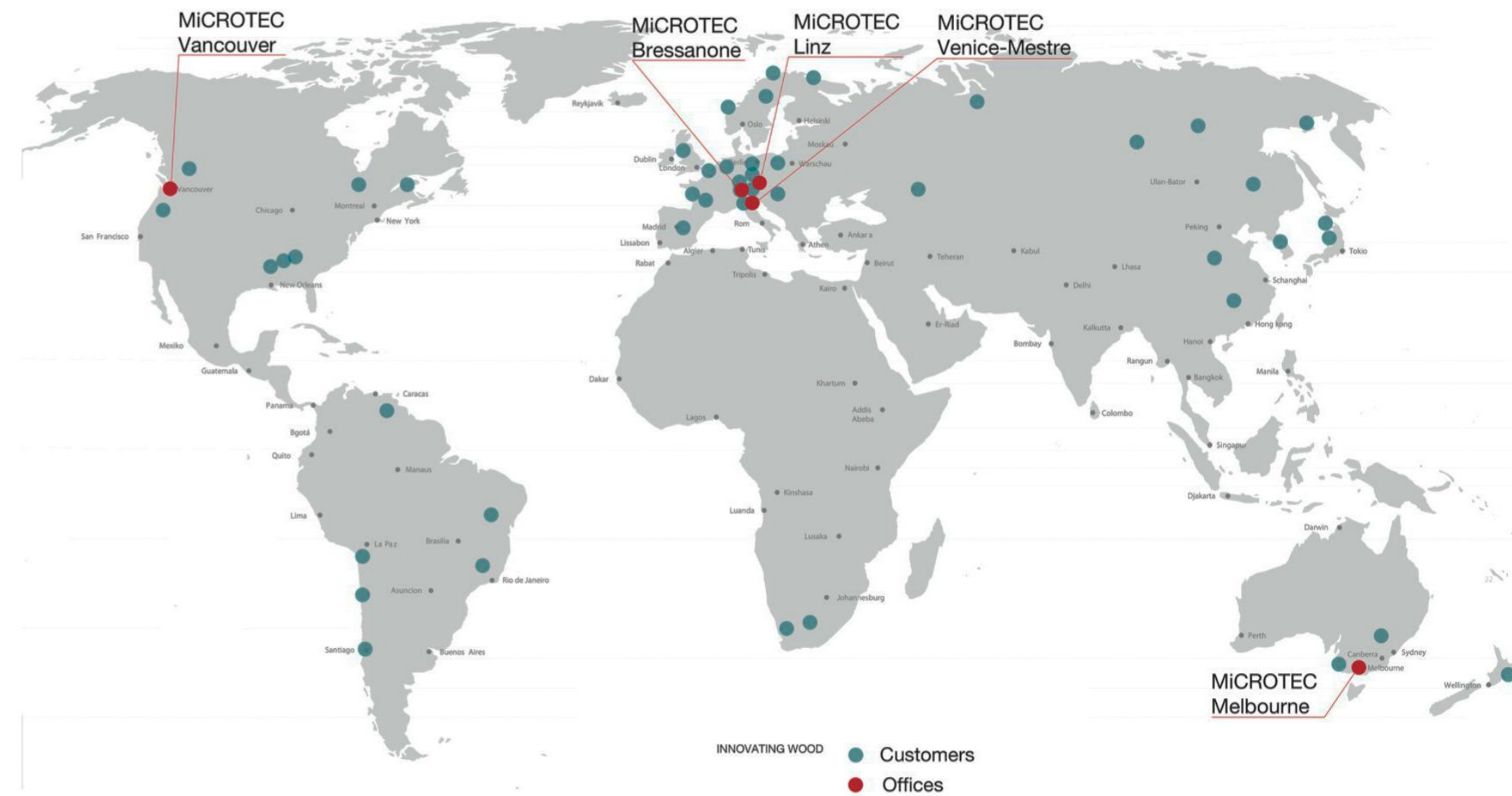


# MORE WITH LESS: EXTRACTING HIGHER VALUE PRODUCTS FROM YOUR LOGS



# SPRINGER-MiCROTEC COMPANY OVERVIEW

- **FAMILY ENTERPRISE**
- **FOUNDED IN 1952**
- **MORE THAN 450 EMPLOYEES**
- **BIG FOCUS ON INNOVATION (15% OF TURNOVER IN R&D)**
- **SUPPLIER OF ALL COMPONENTS IN SAWMILLS, PLANERMILLS, SECONDARY MANUFACTURING**
- **ONE OF THE LARGEST WORLDWIDE SUPPLIERS OF SAWMILL EQUIPMENT**
- **WORLD LEADER AND PIONEER IN X-RAY LOG MEASUREMENT**



5 OFFICES WORLDWIDE  
OVER 1500 ACTIVE CUSTOMERS  
OVER 80 R&D PARTNERS

# X-ray scanning technology overview

## 2D

Radiography or “Discrete Tomography”



## 3D

Computed Tomography or “CT”



# X-ray scanning technology overview

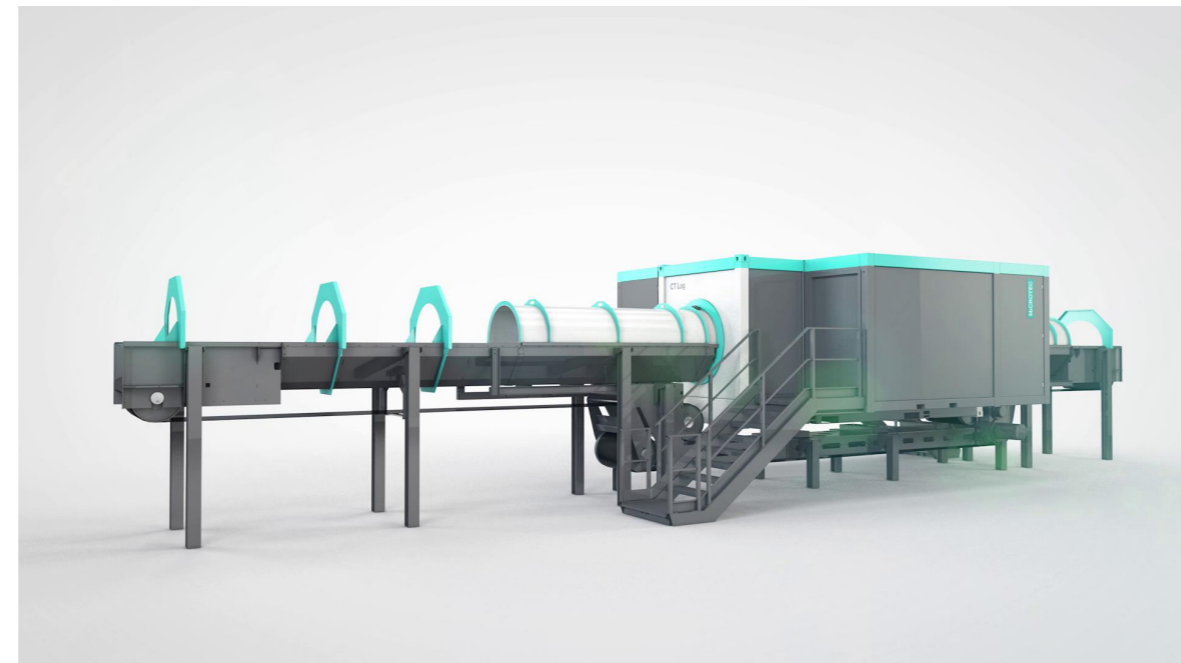
## 2D – LOGEYE 302

Radiography or “Discrete Tomography”



## 3D – CT LOG

Computed Tomography or “CT”



# X-ray scanning technology overview

## 2D – LOGEYE 302

Radiography or “Discrete Tomography”



## 3D – CT LOG

Computed Tomography or “CT”



# X-ray scanning technology overview

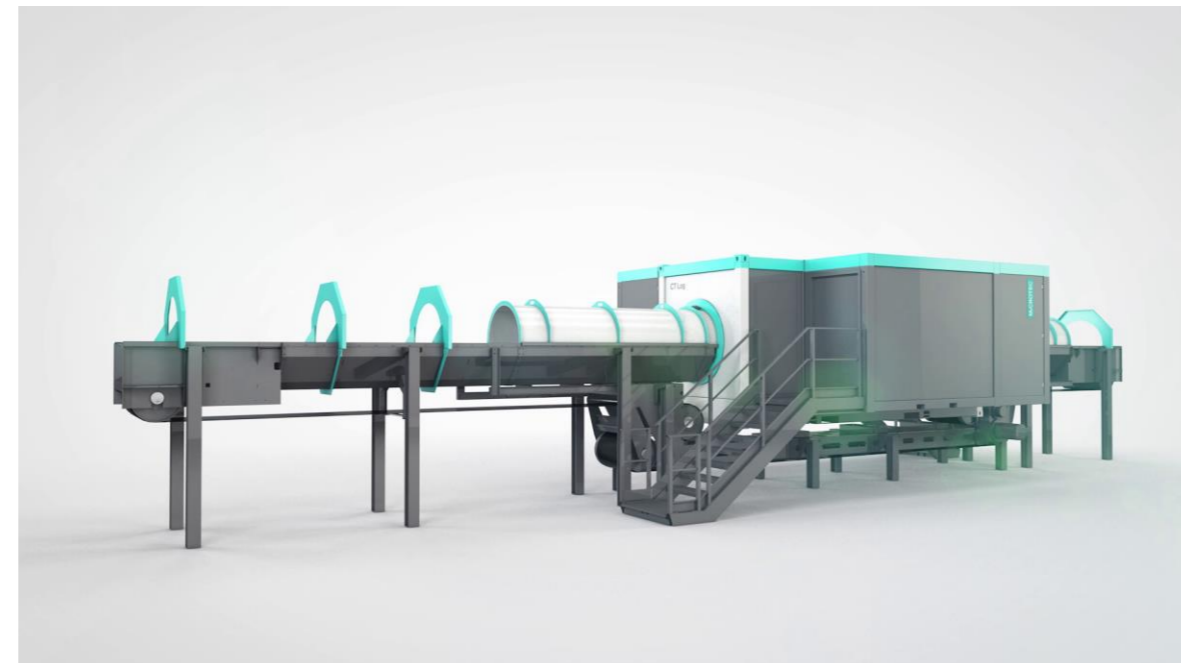
## 2D – LOGEYE 302

Radiography or “Discrete Tomography”



## 3D – CT LOG

Computed Tomography or “CT”



# X-ray scanning technology overview

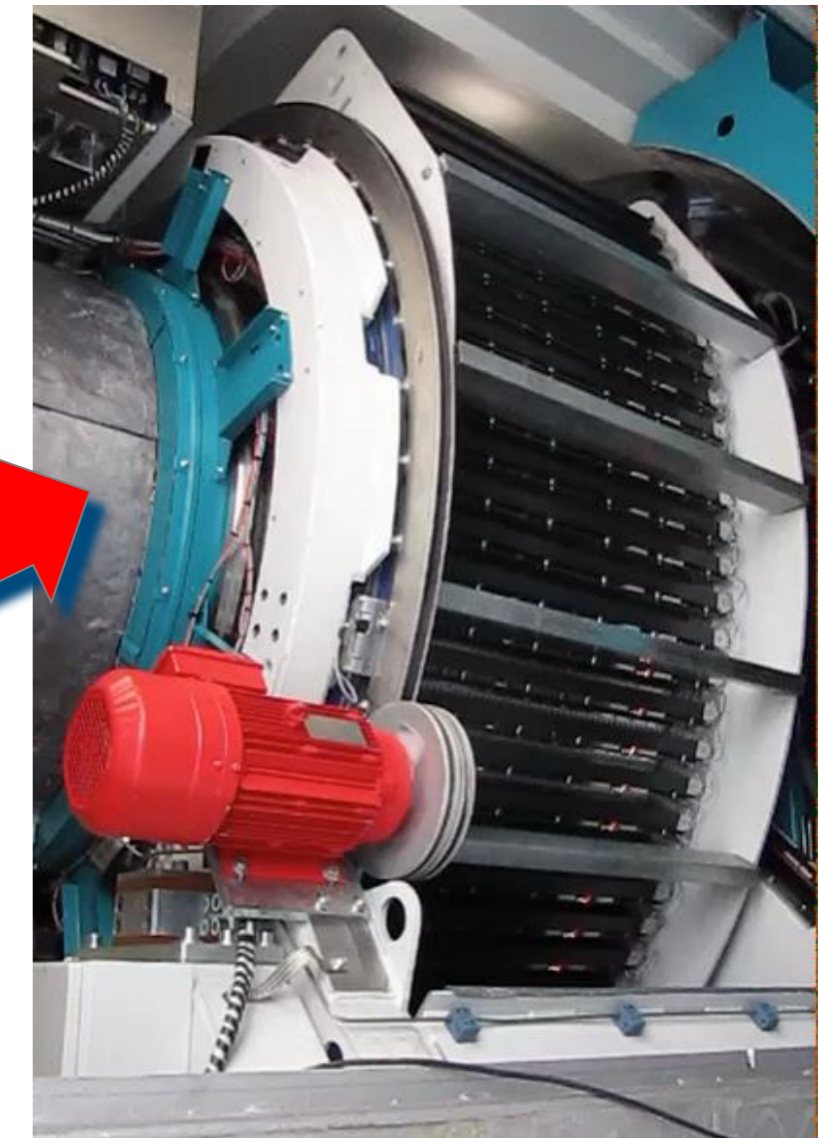
## 2D – LOGEYE 302

Radiography or “Discrete Tomography”



## 3D – CT LOG

Computed Tomography or “CT”



# X-ray scanning technology overview

## 2D – LOGEYE 302

Radiography or “Discrete Tomography”



## 3D – CT LOG

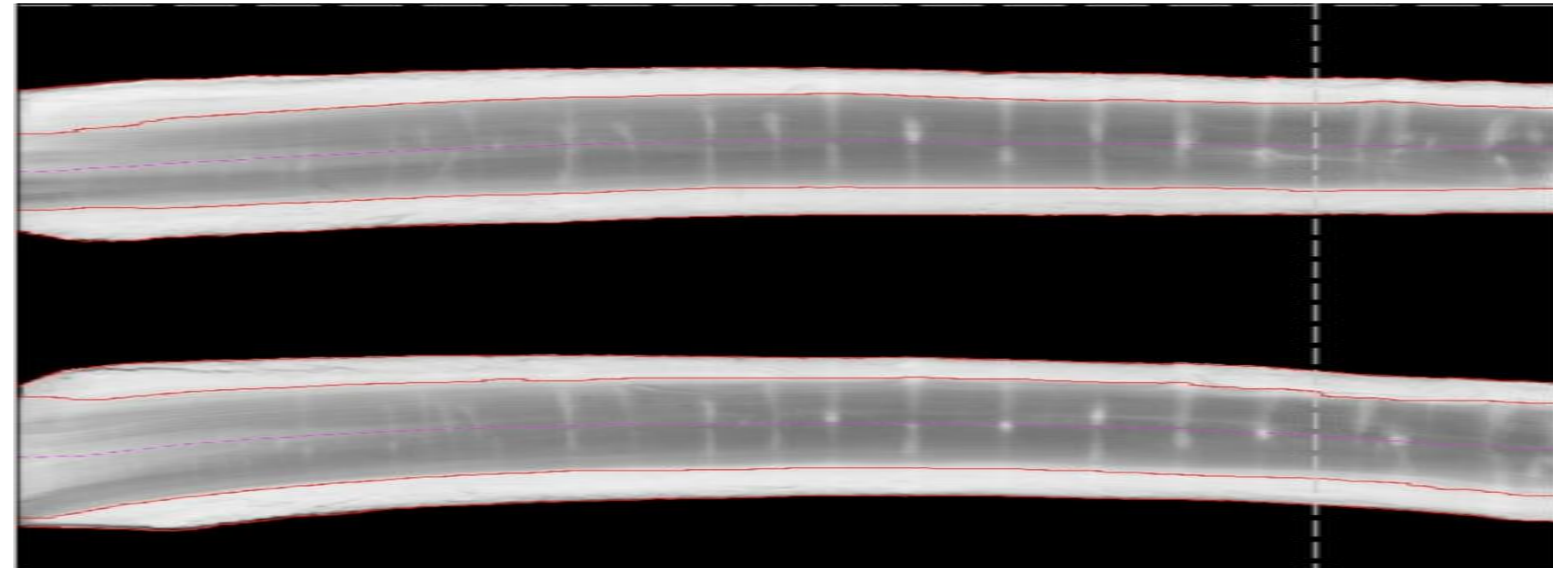
Computed Tomography or “CT”



# X-ray scanning technology overview

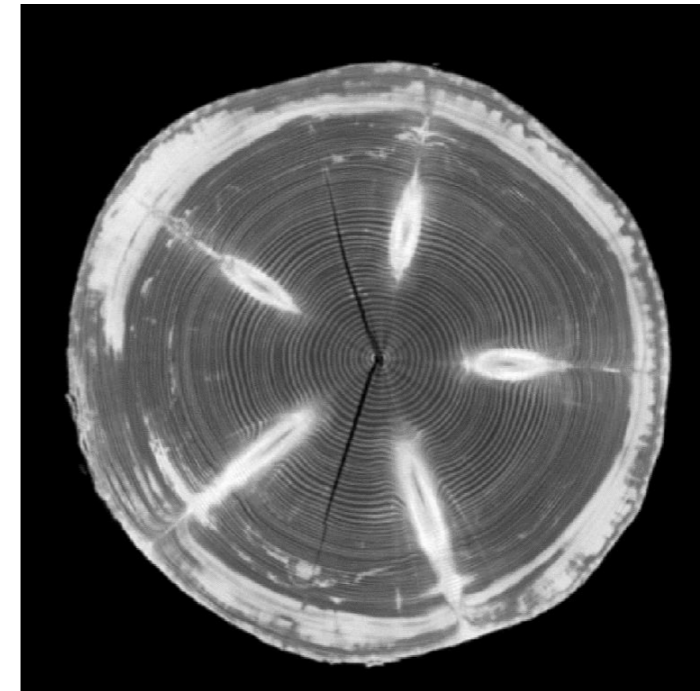
## 2D – LOGEYE 302

Radiography or “Discrete Tomography”



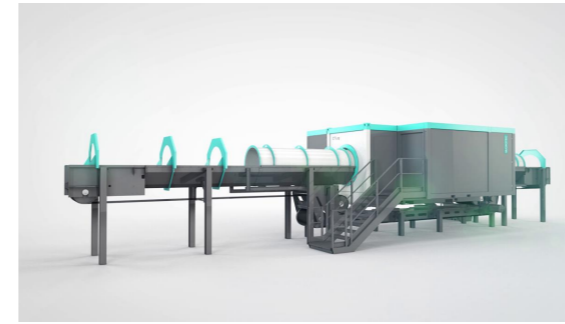
## 3D – CT LOG

Computed Tomography or “CT”



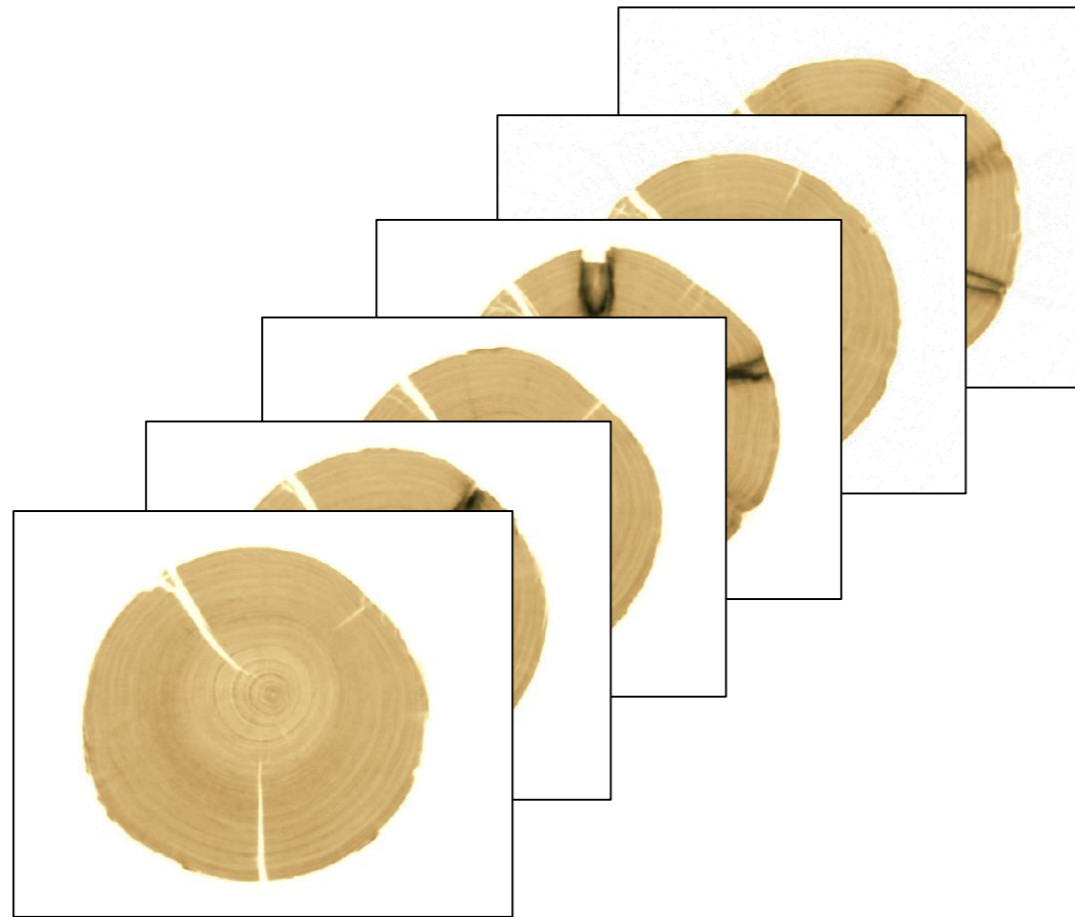
# 3D – CT LOG

Computed Tomography or “CT”

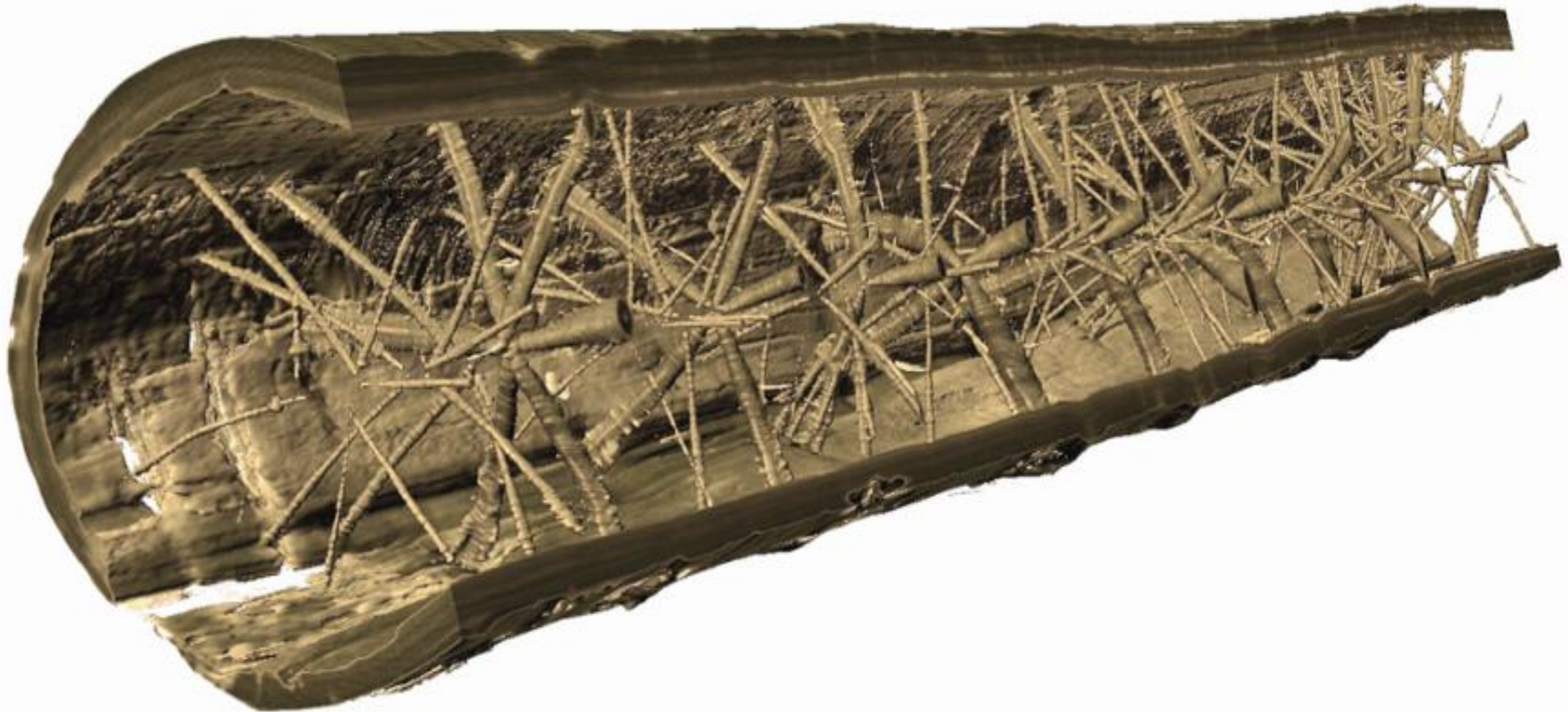


MICROTEC SPRINGER®

Hi-res 2D Slices (1 per cm)  3D volume image



Not just the outside, the inside as well:



# Extracting more value from existing logs:

Pulling High value products  
(eg. Clears) in parallel with NLGA  
Structural Light Framing  
production



# Flexible installation: Merchandising / Sorting Yard Example

Single CT at merchandiser / log sort (590fpm)

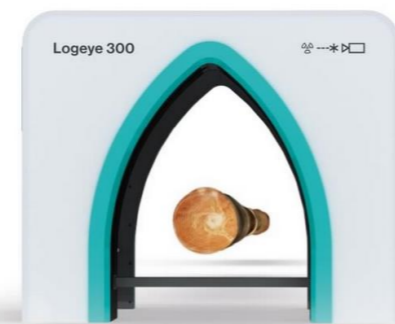


> 100,000 saw logs inventory

Logeye  
“Fingerprint”  
scanners



Small Log Line



DLI



Carriage, etc...

**Veneer**  
(no fingerprint  
required)

**Reject /  
Pulp /  
Chips**  
(no  
fingerprint  
required)

# THANK YOU!

NORVIN.LAUDON@SPRINGER-MICROTEC.COM



Microtec **Logeye 302** X-ray Scanner



Microtec **CT.LOG** X-ray Computer Tomography Scanner